

SEMICONIC

SEMICONIC

Manufacturing Faith...



About us

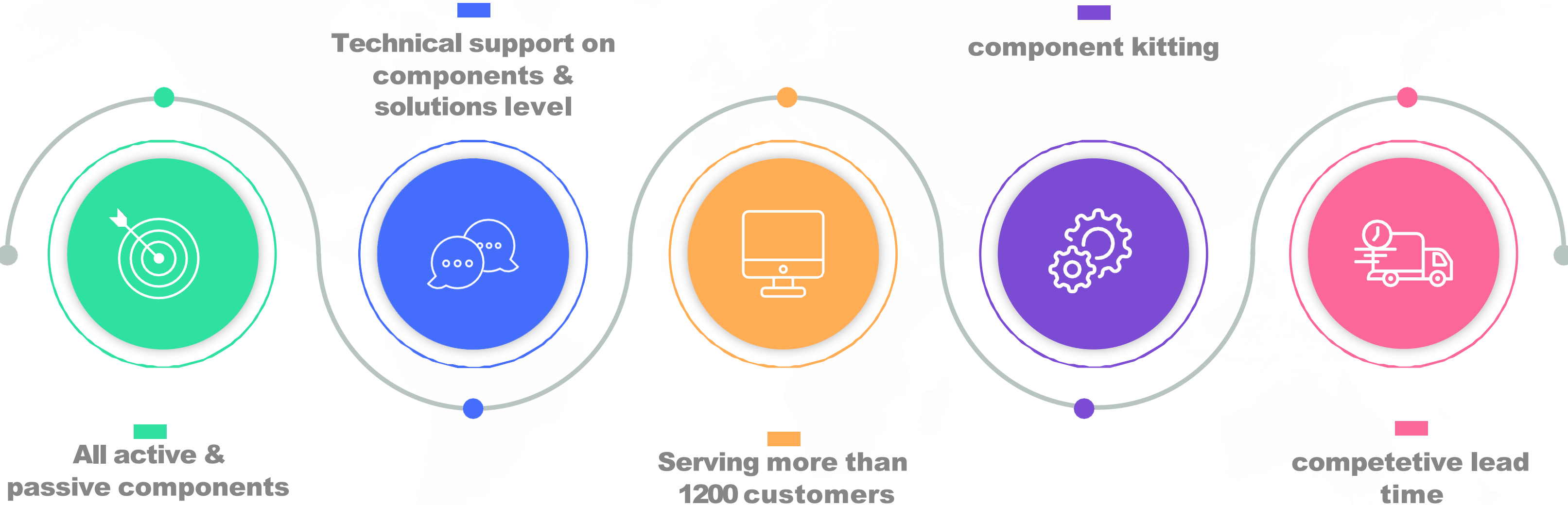
Semiconic Devices, founded in January 2011 and registered in October 2011, is an organization with a core expertise in the distribution of electronic components.

As the leading distributor of electronic components in India, Semiconic Devices is synonymous with innovation and has become one of the most reputed names in the market. With well-established roots in almost every region of India, we have catered to more than 1200 customers across various segments over the last decade.



SEMICONIC DEVICES

SINCE 2011

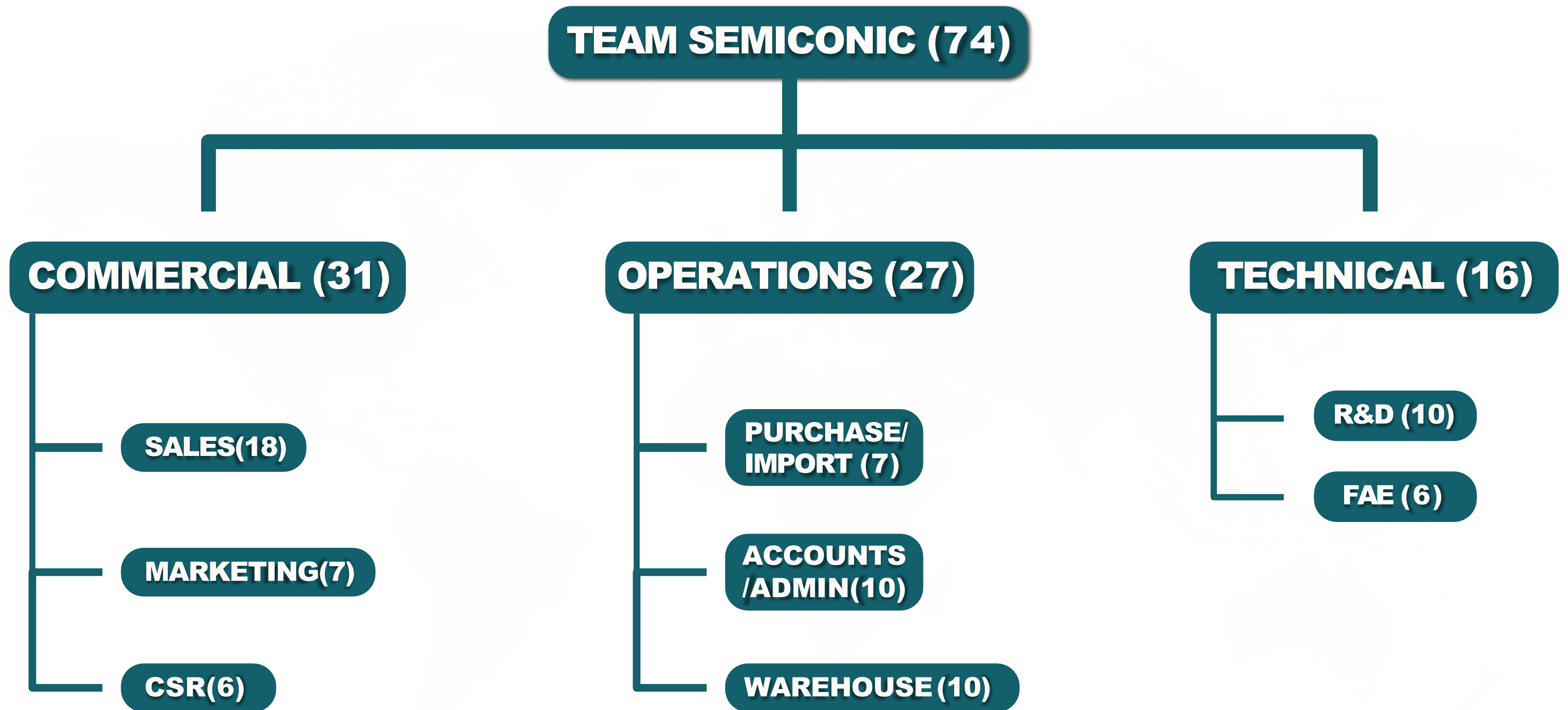


LOCATION & NETWORK

LOCATIONS :- Sales & Marketing

- » **Head Office** – Noida
- » **Sales Office** – Mumbai, Kolkata, Pune & Bengaluru.
- » **Shipping From**
 - **New Delhi** (India)
 - **Hong Kong**





FOCUSED SEGMENTS



Smart E-Meter



BLDC Fans



Automotive



E-Vehicles



Lighting



IOT



Medical



Home Appliances



Defence



Solar

PROCESS

BUSY

- » Realtime stock Accessing
- » Effective order Processing
- » Perfect Accounting

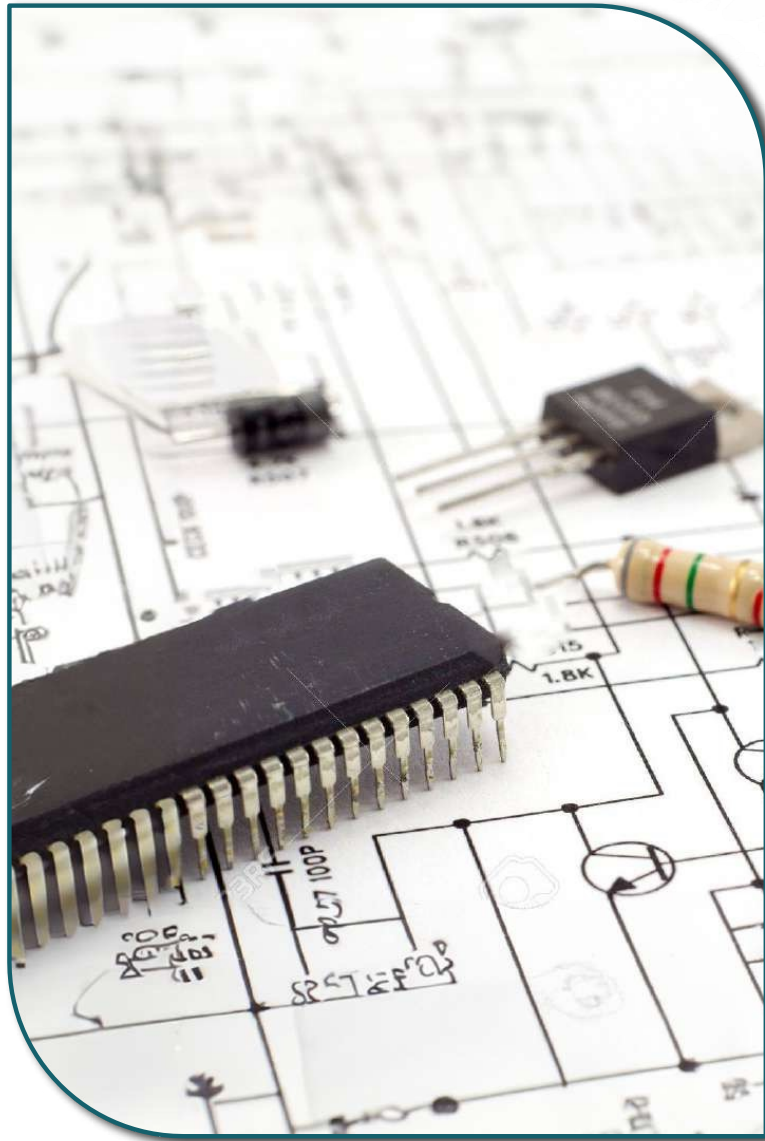
CRM

- » World's No-1 Software
- » Lead Management
- » Real time Dispatch Tracking

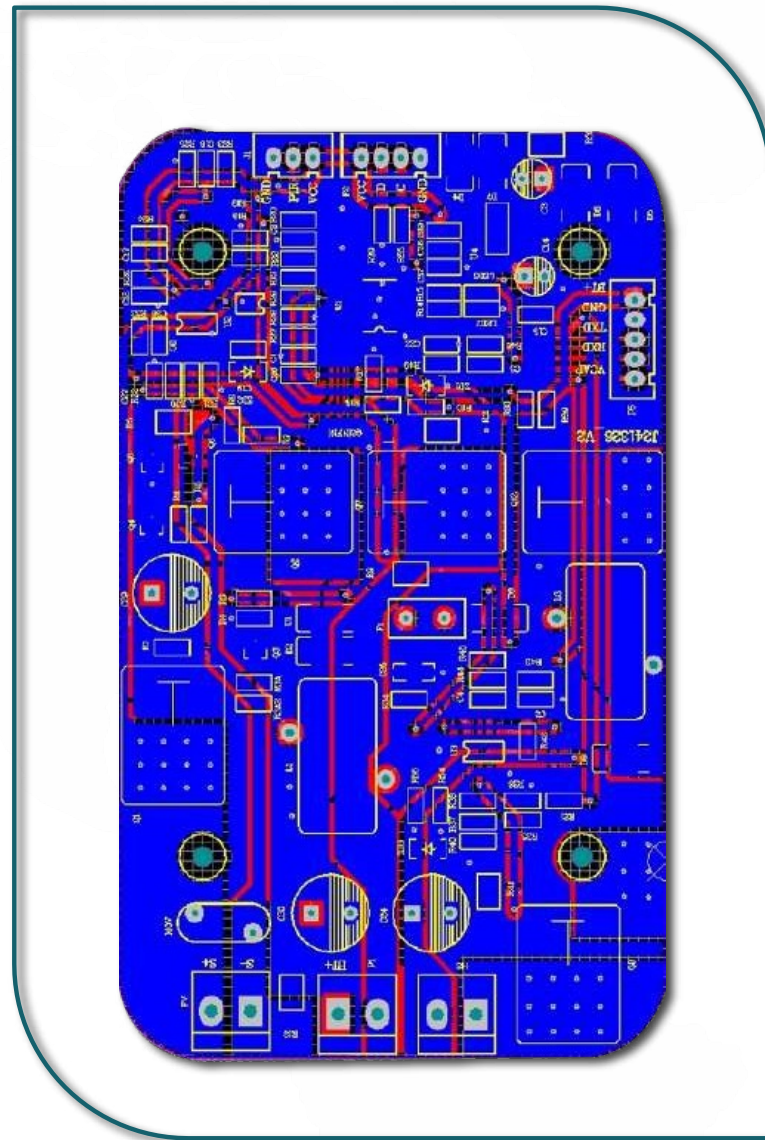
WAREHOUSING

- » Rack system
- » Barcode Tracking
- » Minimal error process

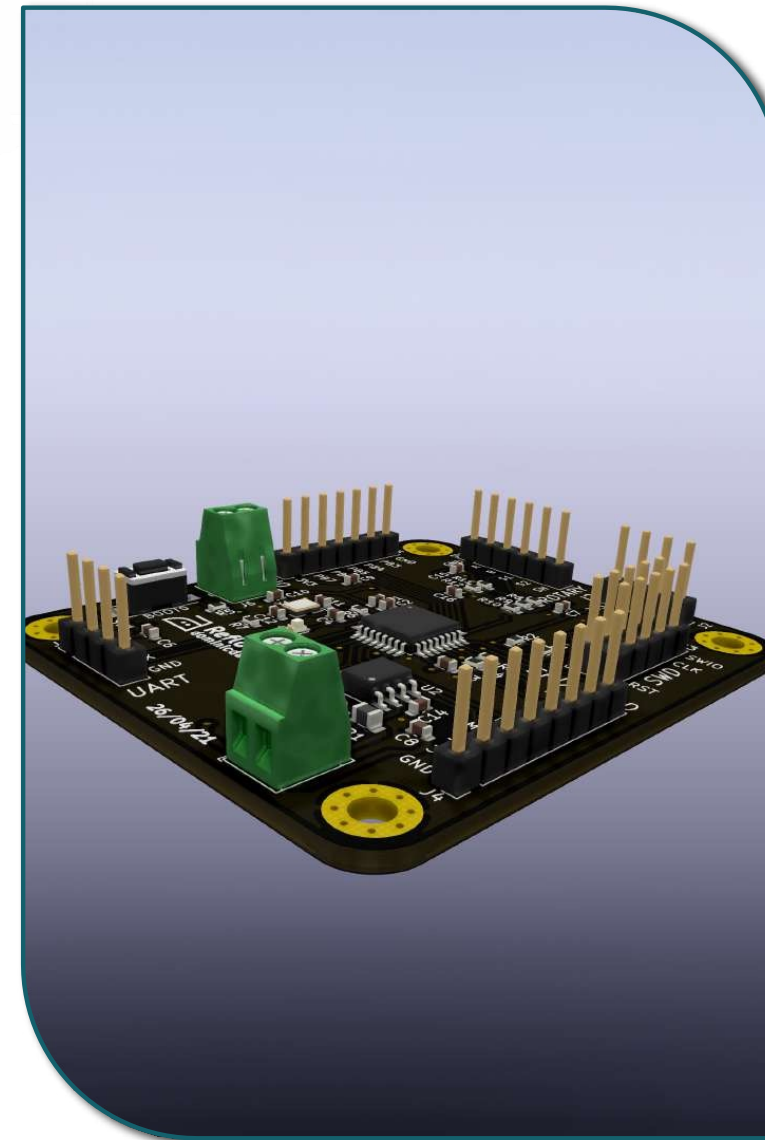
PARTNER IN PRODUCT DEVELOPMENT



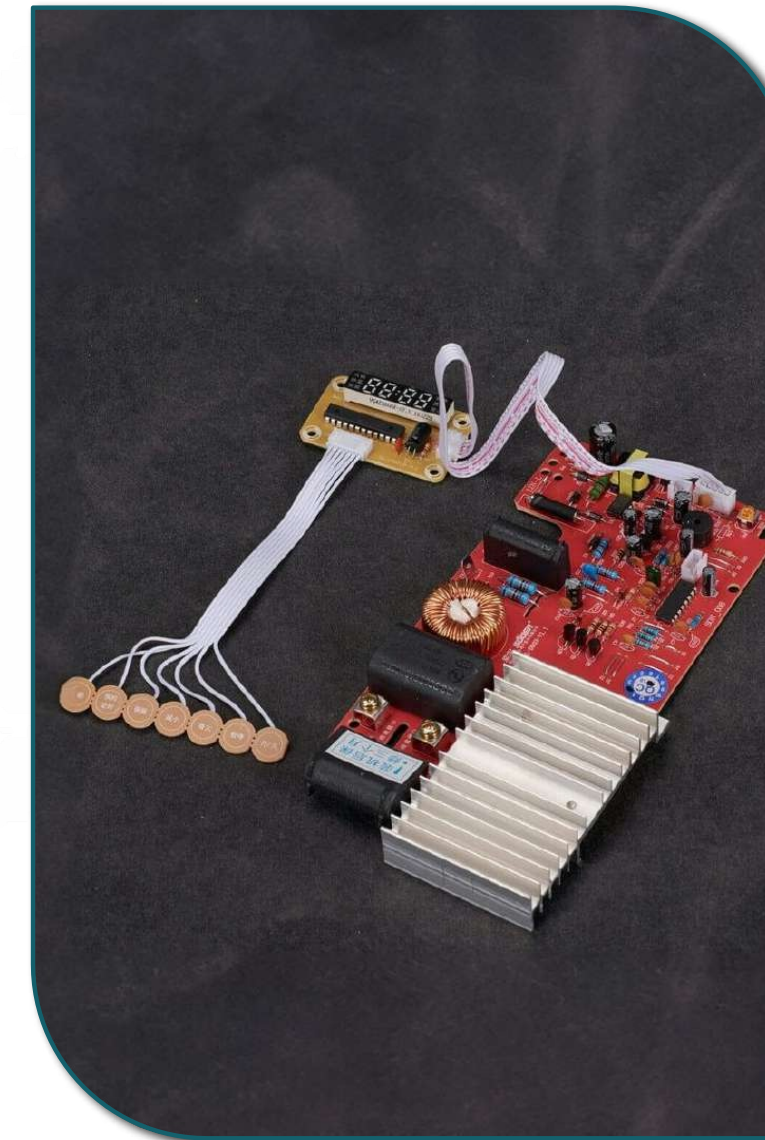
Schematic



PCb Design



Prototype



Demo Board



Lab & Testing



FRANCHISED LINES

E – METER

FOCUSED LINE FOR ENERGY METER SEGMENT

CAVLI



Company Profile :

www.cavliwireless.com

Cavli Wireless designs and manufactures a Complete range of Cellular IoT modules across all technologies - GSM/LTE/NB-IoT/LTE-M/5G! All modules are integrated with eSIM(optional). Providing MADE in INDIA modules.

Product :



- LTE Cat 1.bis (3GPP Release 14)
- ARM Cortex M3 processor: 204 MHz clock
- Integrated GNSS (GPS | BDS | ?ZSS)
- Ultra low power consumption
- PSM available (Idle| Slp 1 | Slp 2 | Hib
- 26.5 x 22.5 x 2.3 mm : LGA FF mPCIe FF Available



- NB2 (3GPP Release 14) 2-HARQ Support Global NB2 Band Support
- ARM Cortex M3 CPU Up to 204 MHz
- 4 MB Flash + 272 KB SRAM
- FreeRTOS Ultra low-power Consumption: PSM available
- Integrated GNSS
- 17.7 x 15.8 x 2.0 mm : LGA FF Compact FF



- LTE Cat 1 with 2G (3GPP Release 10) VoLTE Support
- ARM Cortex A7 processor: 1.3GHz clock
- Yocto Linux OS (Kernel 4.14) With SDK + Full FOTA Support (No DFOTA Currently)
- LCD Interface
- MIPI-DBI Type-B 8-bit
- 37 x 21.8 x 2.8 mm : LGA FF



- LTE Cat M1, NB2 with 2G/EGPRS
- (3GPP Release 14) VoLTE Support
- ARM Cortex-A7 CPU Up to 800 MHz
- ThreadX RTOS With SDK (Q4 2023)
- Ultra low-power Consumption: PSM available
- Integrated GNSS Qualcomm Location Suite

FOCUSED LINE FOR ENERGY METER SEGMENT



www.cavliwireless.com

Success Story :-

- Intellismart for smart meter
- Sinhal Udyog (Kimbal) for smart meter
- Bajaj, Hero, Magna Yuma(Yulu bikes), Bacancy, etc for other applications

Company Location:-

Headquarter - California, USA

Sales presence- India, Spain, Turkey, UK,
France, Germany, Italy

Research & Development – India, Vietnam

Manufacturing & Warehousing - India, Hong Kong



Company Profile :

Boges is a professional company in the design, manufacture and distribution of various high-quality antennas and RF cable for wireless AP, mobile phone and industrial applications; We are a professional supplier of communication and RF connection products for over 4 years.

A more than 4000 square meter building and high levels of facility have been invested in order to establish strong R&D and manufacturing abilities to meet the customer requirement.

Product :



RF Cable Assembly



4G LTE Antenna



4G Antenna



GSM PCB Antenna



<https://www.antennascables.com>

Success Story:-

- Sinhal udyog (Kimbal) Intellismart for smart meter
- VVDN for smart meter
- Gepdec for smart meter
- Havells, Luminous, Bacancy, Teksun, Eigen technologies, etc for other applications

Company Location:-

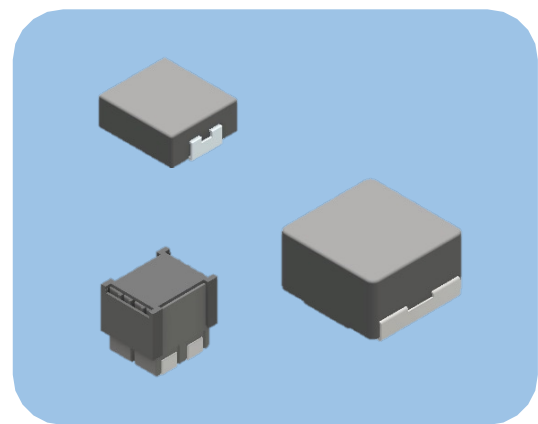
Address : No. 11 Huan Fu Road, Shang Sha Management District, Chang An Town, Dong Guan City, Guang Dong Province China

Factory Address: No. 11 Huan Fu Road, Shang Sha Management District, Chang An Town, Dong Guan City, Guang Dong Province, China

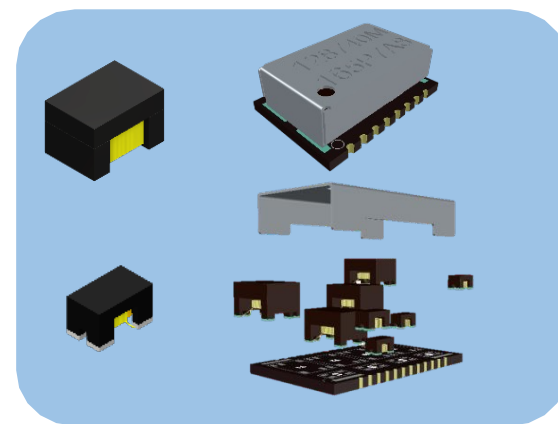
Company Profile:-

- Founded in 1975, until now, we have 49 years of manufacturing experience.
- 4 Manufacturing facilities including Taiwan, China, and Malaysia.
- Main Products: All series of magnetic and EMI components (Inductors, Ferrite Beads Lan Transformer)
- Controlling materials and in-house electroplating for a steady supply of quality material.
- Automated production process, 100% test on electrical parameters and product appearance

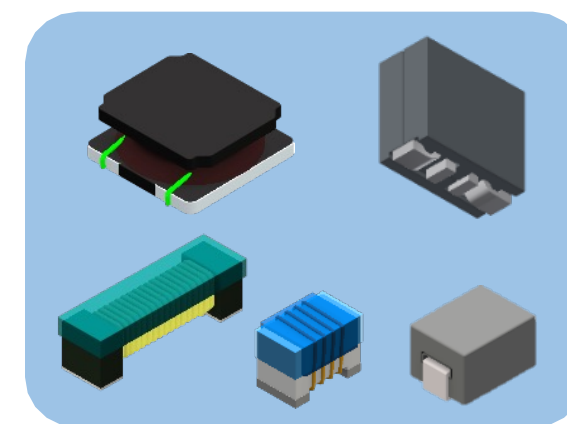
Products:-



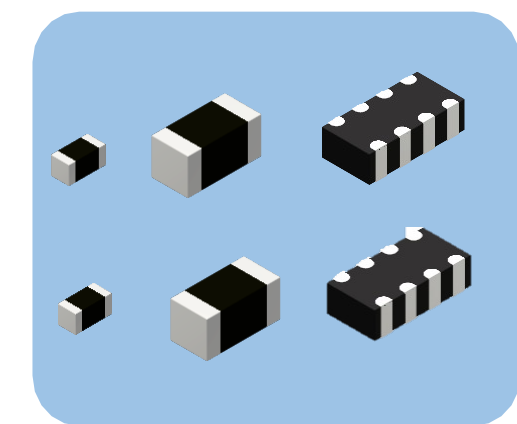
Molding Power Inductor



Common Mode Filter
LAN Filter / LAN Module



Wirewound Inductor
Power Inductor



Multilayer Chip Bead
Multilayer Chip Inductor

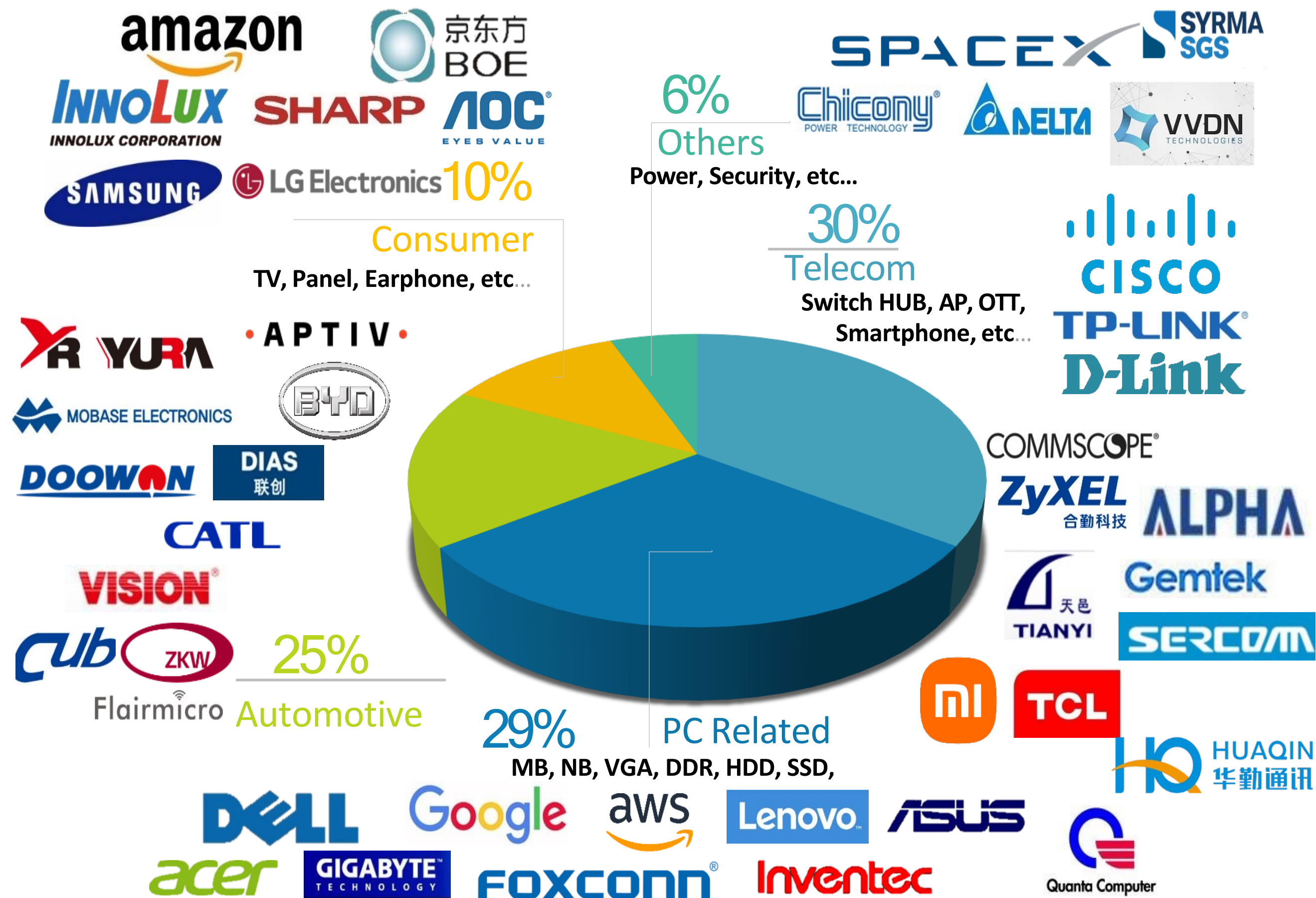
FOCUSED LINE FOR ENERGY METER SEGMENT



www.tai-tech.com.tw

Success

- Story:- Mass Production with the Kimbal E-meter.
- In Co-operation with DIEHL, Delta, Luxshare for E-Meters.
- Approved in VVDN, Havells, Dixon, SGS, Neolite and many more customers for Industrial Consumer and automotive segments.



Company Location:-

- HEADQUARTER - in Taiwan
- FACTORY LOCATION – Taiwan, China, Malaysia.

Company Profile :-



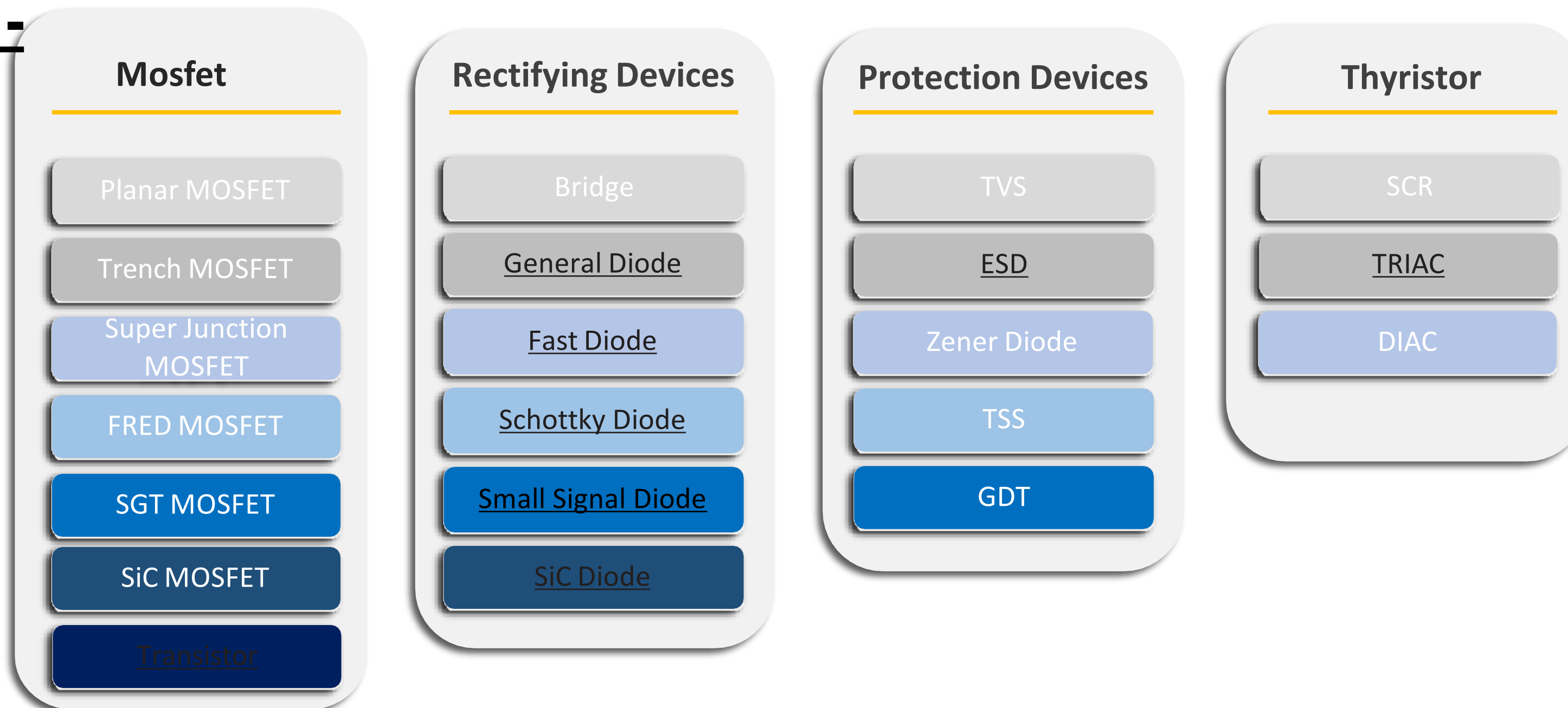
Formosa MS

www.formosams.com

FORMOSA has never stopped innovating and serving. In 2023, FORMOSA's discrete component products will provide semiconductor components for power applications, safety equipment, audio-visual media, automotive semiconductors, servers, and computers.

Mosfets, various diodes, fast recovery diode, Schottky diode, SiC diode, TVS, ESD, Zener, TSS, GDT SCR, Triac, Diac etc. The application products includes aerospace, automotive, 5G, 3C, AI, IOT, PC, power supply and others.

Products :-



Success story

Smart Meter



Automotive



Consumer



Chung-Hsin Electric & Machinery Mfg. Corp.

Company Location:-

SEMICONIC DEVICES PVT. LTD.

17



Formosa Microsemi (Yilan Taiwan)

No. 38, Meizhou 2nd Road, Yilan City, Yilan County, Taiwan
Salse/Fabrication
Business items: Diodes, TVS, MOSFET, Transistor , ESD, TSS, GDT, wafer, SCR, TRIAC



Formosa Microsemi (Taipei Taiwan)

10th Floor, No. 5, Lane 165, Ligong Street, Beitou District, Taipei City, Taiwan Sales
Business items: Diodes, TVS, MOSFET, Transistor , ESD, TSS, GDT, wafer, SCR, TRIAC

Non-China

- Design, Assembly and Testing done in Taiwan
- Expansion of Vietnam factory in 2024 - 2025



Company Profile :-

As the go-to engineering partner for today's innovation leaders and technology entrepreneurs, Our electrical and electronic products are engineered to reliably connect and protect the flow of data, power, and signal – in electric vehicles and aircraft, digital factories and smart homes, and life-saving medical devices, efficient utility networks.

Home Solutions

- Robotics
- Personal Healthcare
- Tools & Outdoor
- Smart Safety & Security
- Small appliances

Industrial & Commercial Solutions

- Indoor outdoor lighting
- HVAC
- Aerospace & Defense
- Industrial Controls, Machinery & Equipment
- Energy
- Medical





Product Portfolio

 <p>Power and Signal Interconnects</p> <p>Electrical components typically consisting of molded housings and conductive metal contacts that are applied to wire by crimping or insulation displacement, then inserted into the housings, and header assemblies for PC board connections.</p>	 <p>Sensors (Cross BU Sell)</p> <p>Measurement devices that detect, transmit, and respond to inputs – such as temperature, humidity, pressure, shock or vibration– with output signals.</p>	 <p>Terminals and Splices</p> <p>Conductive devices applied to a wires or components that facilitate electrical connection to another wires or components.</p>	 <p>Magnet Wire Terminations</p> <p>Terminals and splices that are specifically designed for use with magnet wire and do not require pre- stripping of the magnet wire for connection.</p>	 <p>Heat Shrink Tubing</p> <p>Tubing of crosslinked polymer materials that shrinks upon heating to insulate, protect, seal and bundle the wiring or component over which it is applied.</p>	 <p>Relays</p> <p>Electrically controlled switching devices that interrupt and complete an electrical circuits by using electro-mechanical means.</p>	 <p>RAST Connectors</p> <p>Electrical connectors based on specific standards to help assure intermateability of connectors from one manufacturer to another and to reduce mismatching errors on assembly lines.</p>
--	--	---	---	--	--	--

Company Location:-

TE Connectivity India Pvt Ltd
RMZ NXT, Campus 2A, 1st Floor
Sonnenahalli, KR Puram Hobli
Bangalore-560066
Karnataka, India

FOCUSED LINE FOR ENERGY METER SEGMENT

NISSHINBO

NISSHINBO

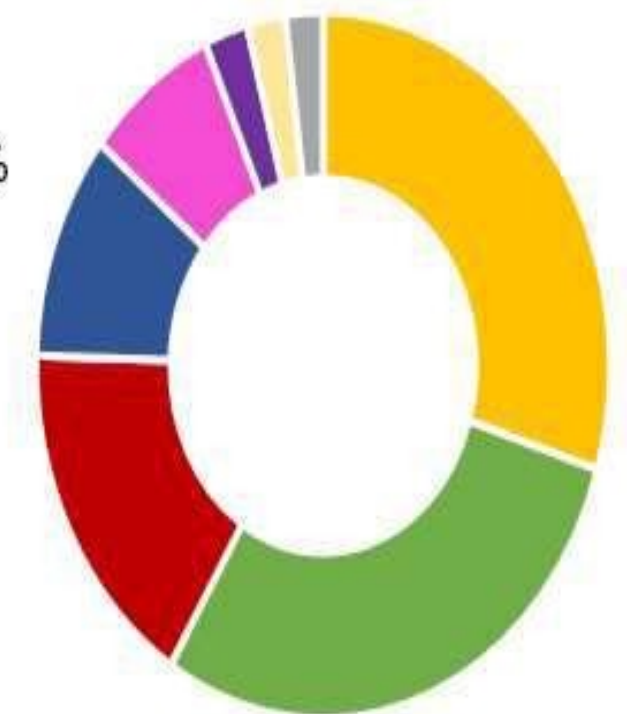
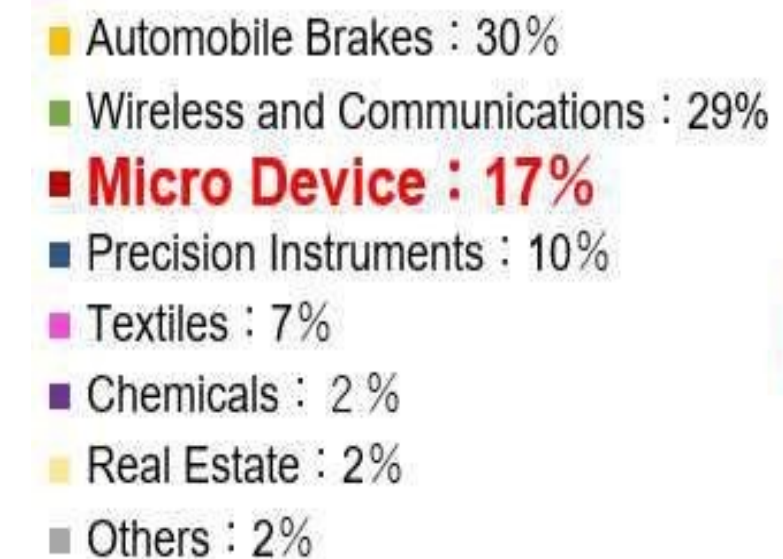
www.nisshinbo-microdevices.co.jp

Company Profile:-

We contribute to realizing a smart society through technologies that connect Human to Human, Humans to Things.

Products:-

- Operational Amplifiers & Comparators Audio Video ICs6
- Analog Front End Power Management ICs
- Reset & Watchdog Timer ICs Battery Management ICs
- RF Devices Optoelectronic Devices Motor ICs
- Signal Conditioning Peripherals



Share of Total Sales
in FY2022

Success story:- Supplying IC Singhal Udyog & VVDN

Company Profile:-

Epson Microdevices is a global technology leader that designs and manufactures frequency control products, semiconductors, and sensing systems. Epson products help customers create, transport, and utilize data in today's information-driven world. Led by the Japan-based Seiko Epson Corporation, the Epson Group comprises more than 73,000 employees in 91 companies around the world, and is proud of its contributions to the communities in which it operates and its ongoing efforts to reduce environmental impacts.

Products:-



MC-146

- Crystal Oscillator
- Real Time Clock Module
- SPXO / TCXO



FC2012AN

- SPXO / SPSO
- TCXO / VC-TCXO
- VCXO / VCSO



FC-135



FC3215AN

- IMU, Vibration Sensor / Accelerometer
- Gyro Sensor



FC-12M

Success Story:-

- Secure for energy meter.
- Genus for energy meter.
- HPL for energy meter.
- Capital power for energy meter.
- VVDN, Hero for Industrial Applications.
- Minda, Tata, Interface, Ion Energy, etc for Automotive & EV applications.

Company Location:-

Address - JR Shinjuku Miraina Tower 4-1-6 Shinjuku,Shinjuku-ku,Tokyo 160-8801, Japan

FOCUSED LINE FOR ENERGY METER SEGMENT

VIKING



www.viking.com.tw

Company Profile:-

Viking Tech is a Global Passive Manufacturer listed company in Taiwan, that designs and manufacture Thin Film, MELF, Thick Film, Automotive Resistor, Inductor, Capacitor for industrial, Automotive, Medical, consumer segments. The manufacturing facilities located in Taiwan and China. Having certification of AECQ-200, ISI13485

Products:-

Resistors



Precision
Metal Strip
Ultra Low Ohm
Surge Withstanding
Anti-Sulfurated
Power Resistor

Capacitors

Multilayer Capacitor Ultra
High Quality and Low ESR



Melf Resistors

AEC Q200 Thin film
technology Excellent stability
tolerance down to ± 1
Extremely low TCR 10 PPM/C
High power rating up to 1 Watt



Inductor

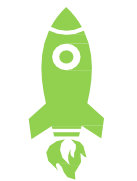
High Frequency
Miniture
High Power
Thin Film Common Mode Filter





Success story:-

- Viking Covers the major Market share of China E-Meter Mfg (State Grid Corporation, Benning, Linyang)
- Approved at India customers like Minda, Luminous, L&T, Bajaj, OLA, Magneti Marelli etc



APPLICATIONS & CUSTOMER

Industrial

Automotive

Medical

Consumer

Company Location:-

- HEADQUARTER - In Taiwan
- FACTORY LOCATION – Hsin chu & kaoshiung Taiwan, Wuxi- China.

FOCUSED LINE FOR ENERGY METER SEGMENT

SG-MICRO

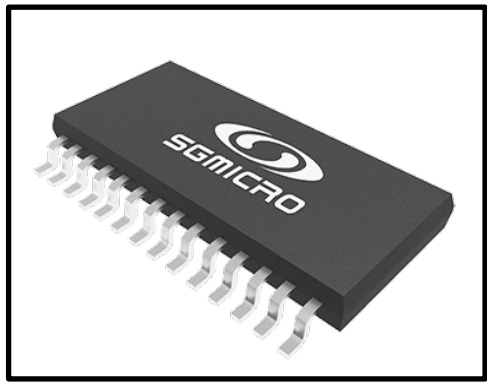
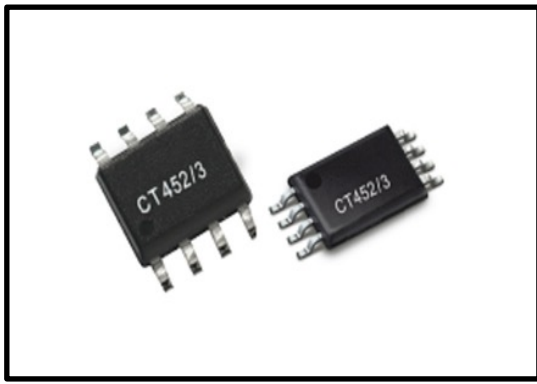
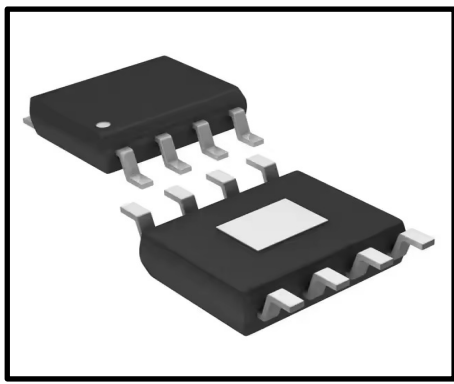


www.sg-micro.com

Company Profile :-

SG Micro Corp specializes in designing and supporting high-performance analog ICs for various markets. The company has introduced more than 4,600 reliable and consistent analog IC products, including amplifiers, comparators, sensors, ADC/DACs, switches, and power management ICs.

Products:-



Instrumentation AMP	Level Shitter	DC/DC Buck Converter	Battery Protections
Audio Power Amplifier	Logic IC	DC/DC Boost Converter	Motor Driver
Video Buffer	Voltage Reference	DC/DC Buck-Boost Converter	MOSFET Driver
Line Driver	Analog Switch	BL/FLASH WLED Driver	PMU
Temperature Sensors	RF Switch	AMOLED Bias	MOSFET
Σ-ADC	ESD Protection	Supervisory IC	
SAR ADC		OVP & Load Switch	

FOCUSED LINE FOR ENERGY METER SEGMENT



www.sg-micro.com

Key Facts:-

- 1400+ employees totally, among whom 1000+ are engaged in new product development related activities.
- 1000+ Invention Patent Filings.
- 5000+ Products.

- Publicly traded at China Shenzhen Securities Exchange (stock code: 300661)
- 10 technology centers in the cities of Beijing, Harbin, Shanghai, Shenzhen, Suzhou, Chengdu, Dalian, Hong Kong, etc.

Success story :-

- Polaris for energy meter
- allied engineering works for energy meter
- Alphion India pvt ltd for energy meter
- VVDN for many projects including cameras, tablet, and other industrial & consumer devices

Company Location:-

Headquarters - Address: 87 Xi San Huan North Road, the IFEC Building D-1106, Haidian District, 100089 Beijing

Sales office - Tokyo, Frankfurt, Taipei, Shanghai, Shenzhen, and 10TH sales offices in China.

FOCUSED LINE FOR ENERGY METER SEGMENT

JIYA DISPLAY



www.jiyadisplay.com

Company Profile :-

Jia Electronics Co., Ltd. Was established in 2004. It specializes in designing, developing, and manufacturing monochrome and color (TFT) LCD modules, application intelligent displays, and related electronic products. In February 2017, it was listed on the National Equities Exchange and Quotations (NEEQ). The company has become one of China's leading LCD module manufacturers, offering a range of monochrome and color liquid crystal display modules and embedded application intelligent display products.

Products:-



Success story :- VVDN

Company Location:-

Address - No.36. Road 2, Lang fang Economic & Technical Development Zone Hebei Province, 065001 P.R.China

FOCUSED LINE FOR ENERGY METER SEGMENT

OTHER LINES



KLS
Connectors.
Switches.
DC fans.

www.klselectronic.com



NOVOSENSE
GATE DRIVER, ISOLATOR,
AUTOMOTIVE GRADE, CAN,
485 TRANSCEIVER
LOW DROPOUT REGULATOR

www.novosns.com



IGNION
NAMO Mxtend
ONE mXTEND
DUO mXTEND

<https://ignition.io>



HONGFA
Relays.
Transformers
Film Capacitors

www.hongfa.com



SEMIHOW
Super junction Mosfet,
Planner Mosfet,
Triac & SCRIGBT

www.semihow.com



GHGM
Led connector
Slide switch
Waterproof connector

www.ghgmlink.com



EVE
Primary lithium battery
cylindrical cell prismatic
LPF cell NCM cell

www.evebattery.com



VITZROCELL
Lithium primary battery
High temp battery

<https://vitzrocell.com>



CET-MOS
MOSFET'S
20V to 1000V range.

www.cetsemi.com

FOCUSED LINE FOR ENERGY METER SEGMENT

OTHER LINES



CUBIC

Gas sensor for gas meter
O2 and Nox sensors
air quality sensors

<https://en.gassensor.com.cn>



DAFU/NDF

MOV,
SMD MOV.

www.ndf.com



RELDEV

REL60S latching relay
REL80C latching relay

<https://reldevelopments.com>



KEC

Diode & rectifier
IGBT.
MOSFET

www.keccorp.com



OASISTEK

Led Display
Lamp
Led lighting series

www.oasistek.com

MAJOR CUSTOMER OF ENERGY METER

Intelli^{mart}
A JV of NIIF and EESL

HPL
POWER OF TECHNOLOGY

VVDN
TECHNOLOGIES

Kimbāl
Efficient Energy Everywhere

GEPDEC
INNOVATING INFRASTRUCTURE

POLARIS

Alphion
Enabling the photonic future

MAJOR CUSTOMER OF LIGHTING

SURYA
Energising Lifestyles

PHILIPS
Lighting


HAVELLS

Dixon

 **orient**
electric

Jaquar
LIGHTING

Future is this
HALONIX

 **overdrive**
Driven by Innovation

 **Crompton Greaves**

CUSTOMERS


HAVELLS

IFB


ILJIN

VOLTAS


HELLA


OLA

LUMAX 

NIPPON


NAPINO


NEOLITE


SWISS
AUTO SERVICES

nexcharge


Genus
energizing lives


HPL


Kimbāl

Intelli  **mart**
A JV of NIF and EESL


ERD
The Power of Innovation


PhonePe


Jio


airtel


Kühl
Stylish Fans


orient
electric

Crompton


wipro


BAJAJ


POLYCAB

Panasonic
ideas for life

HALONIX


SGS Teknics
A Syntex SGS Group Company


VVDN
TECHNOLOGIES

LUMINOUS

Dixon
The brand behind brands

FUJIIYAMA
SOLAR


signify


LUKER

OSRAM

EXHIBITION PARTICIPATION



LED EXPO 2019



LED EXPO 2022



ELECTRONICA EXPO 2023



CONVERGENCE EXPO 2024

AVAILABLE HERE

SEMICONIC

Manufacturing Faith...

HEAD OFFICE:- NOIDA

BRANCH OFFICES :- BENGALURU
KOLKATA
MUMBAI
PUNE

Office Add:- B-145, phase-II, Gautam
Budha Nagar, Noida, UP-201301

Mobile :- +91-8920341349, 8178832808
+91-9911105924

WAREHOUSE :- A-50, Basement floor 70part
Rama Road Industrial Area, Kirti-nagar,
New Delhi – 110015INDIA

A close-up photograph of a person wearing a dark blue suit jacket over a light blue shirt. The person's right hand is extended forward with the palm facing up, in a gesture of openness or gratitude. The background is blurred, focusing attention on the hand and the text.

THANK YOU